

TECHNICAL CHARACTERISTICS

Thickness, mm	9-40
Surface type	Smooth/wire mesh (F/W)
Film density, g/m ²	120, 220
Formaldehyde emission class	E0.5
Wear resistance of the film, cycles in Taber abrasion test	≥400
Water resistance	High
Plywood density, kg/m ³	640-700
Moisture content, %	≤12
Edge sealing	Acryl-based water resistant paint, dark brown

SIZES

Standard sizes, mm (ft)
1220x2440, 1250x2500 (4x8)
1220x3000, 1220x3300 (4x10)
1525x2500 (5x8)
1500x3000 (5x10)
1500x3300, 1525x3300 (5x11)
1525x4000 (5x13)

THICKNESS AND NUMBER OF PLYS

Nominal thickness, mm	Number of plies	Tolerances on nominal thickness, mm	Tolerance on thickness within one panel, mm
9	7	+0.4/-0.6	0.6
12	9	+0.5/-0.7	
15	11	+0.6/-0.8	
18	13	+0.7/-0.9	
21	15	+0.8/-1.0	
24	17	+0.9/-1.1	1.0
27	19	+1.0/-1.2	
30	21	+1.1/-1.3	
35	25	+1.3/-1.5	
40	28	+1.4/-1.6	

Producer: Plitwood LLC., Russia, 162040, Vologda region, Vokhtoga settlement, Zheleznodorozhnaya str., 83

Sales Department:
+7 (921) 821 87 48 (export)
+7 (921) 935 75 43 (Russia, CIS)

sales@plitwood.ru



nord.eco



TRANSPORTATION PLYWOOD

100% birch plywood with anti-slip surface

Floors in commercial vehicles, busses, cargo platforms



ENDURES MORE LASTS LONGER



nord.eco

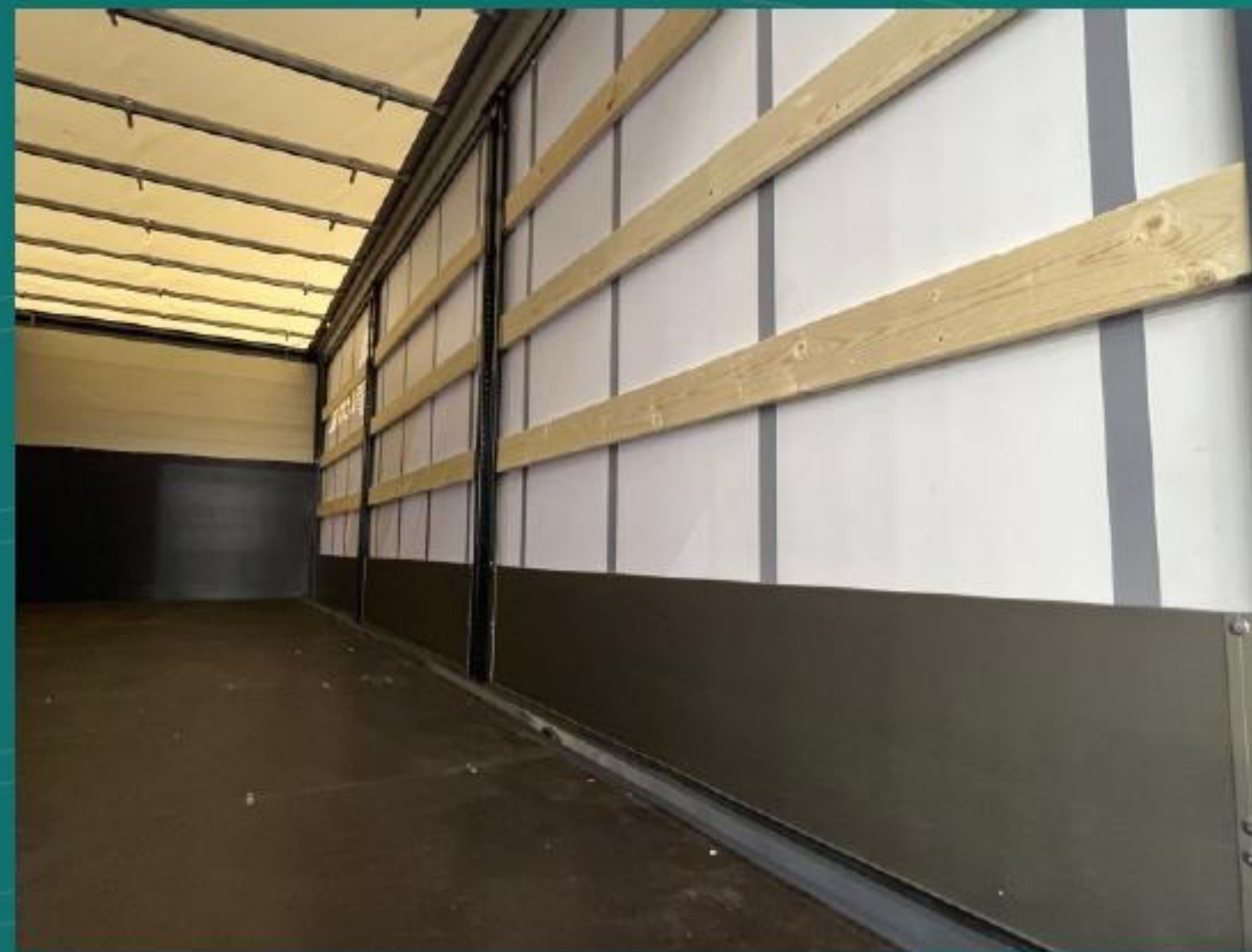
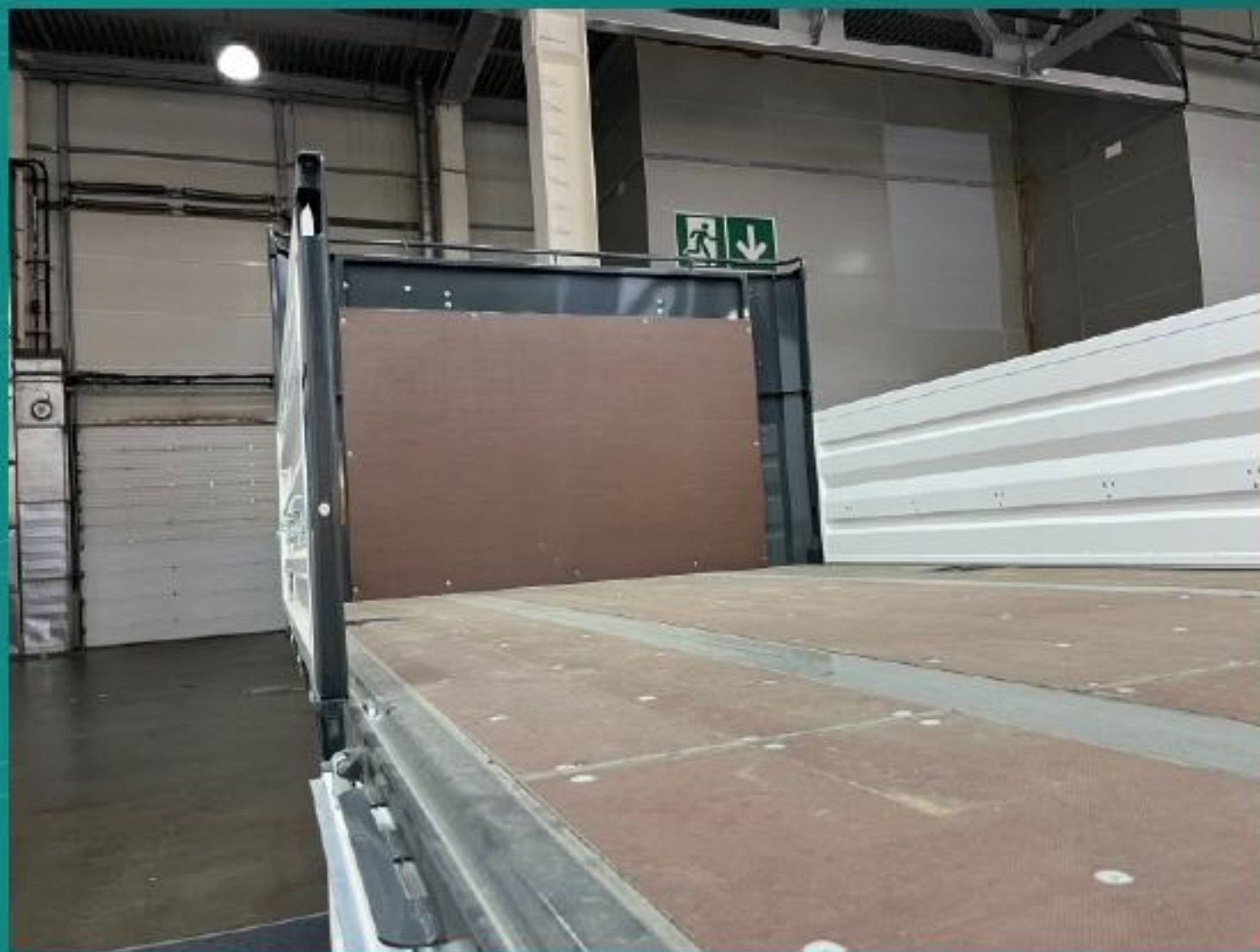
COMPLIANCE E0.5 CE CARB EPA

TRANSPORTATION PLYWOOD NORDECO TRUCK | 100% NORDIC BIRCH | Water-resistant | Wear-resistant | Slip-proof | Enduring

FOR PLATFORM TRAILERS

FOR CURTAINSIDERS

FOR RESPONSIBLE APPLICATIONS WHERE SAFE AND RELIABLE FLOOR OPERATION IS REQUIRED

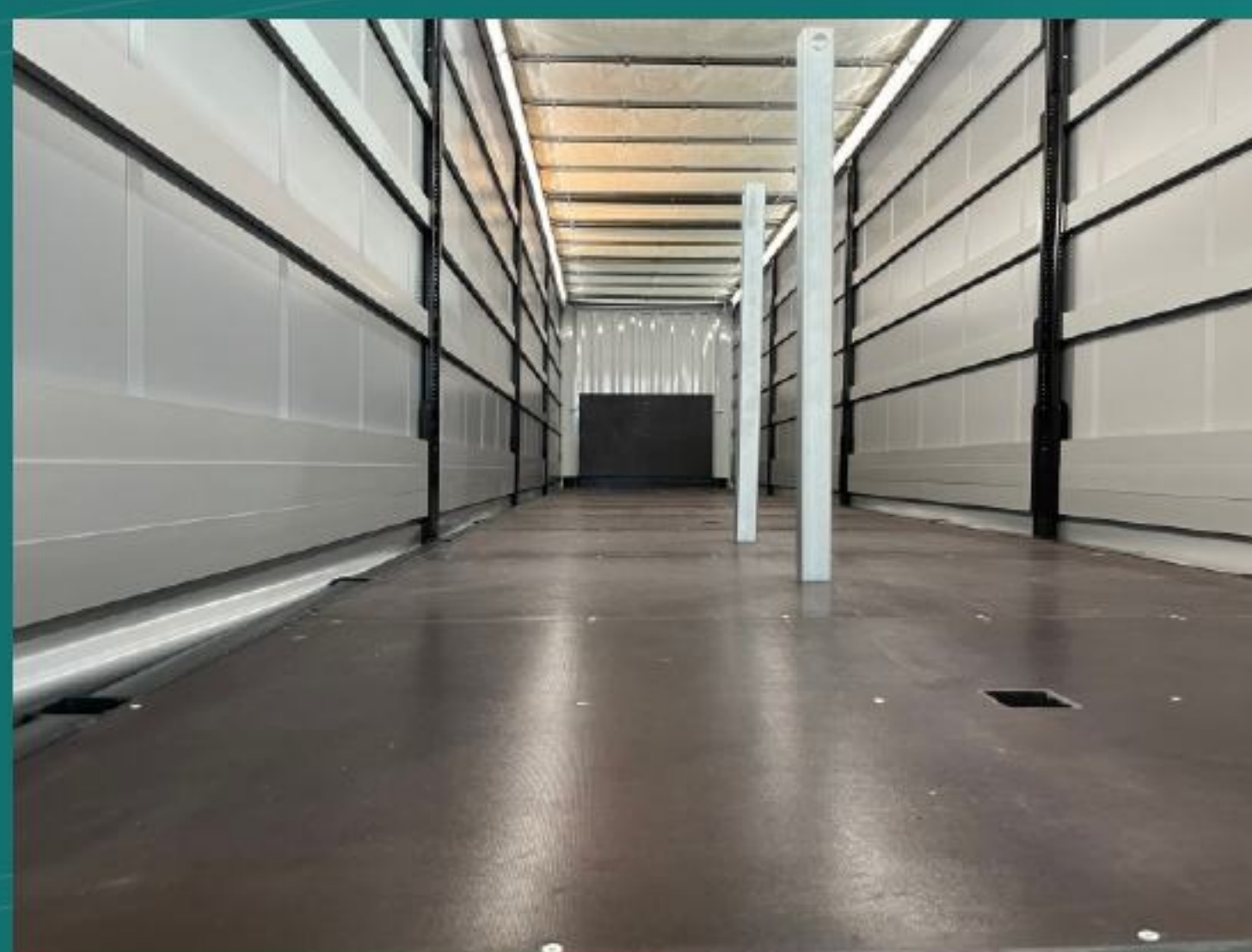


- trailers and semi-trailers,
- vans,
- minibuses,
- passenger buses,
- slats and transoms for PVC boats,
- loading platforms, shelves,
- children's and sports playgrounds,
- concert and stage areas,
- pedestrian walkways,
- construction scaffolding

Flooring, impact protection for the front wall, impact protection for the sides



FOR BOX BODIES



100% NORDIC BIRCH ANY SIZES FROM 4' x 8' to 5' x 13'



with logo

without logo