



Transportation plywood NORDECO Truck – for durable, safe flooring

July 2025

Prepared by Yulia Ermakova, NORDECO PLYWOOD Marketing Director



Transportation plywood NORDECO Truck – 100% birch plywood with anti-slip surface

Floors in commercial vehicles,
Any anti-slip floors and platforms



ENDURES MORE
LASTS LONGER





Why NORDECO Truck?

100% Nordic birch plywood reliable in operation

PRODUCT FEATURES



100% HARDWOOD



HIGH WEAR RESISTANCE



HIGH MOISTURE RESISTANCE



ANTI SLIP-PROOF



RESISTANCE TO AGGRESSIVE ENVIRONMENTS,
INCLUDING CHEMICALS



RESISTANCE TO TEMPERATURE FLUCTUATIONS
FROM -40 TO +50 °C



18 mm plywood – 13 plies
27 mm plywood – 19 plies
30 mm plywood – 21 plies
100% NORDIC BIRCH



Why NORDECO Truck?

Meets the requirements of commercial vehicles producers

PLATFORM TRAILERS



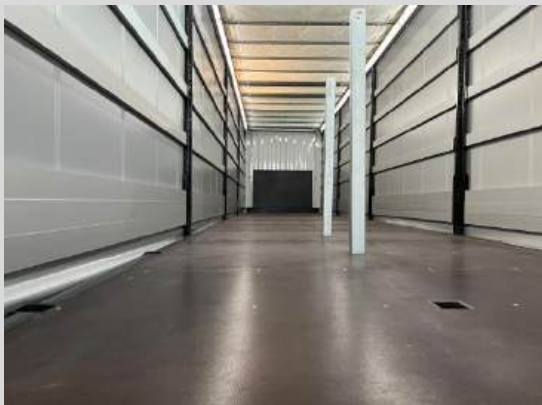
CURTAINSIDERS



BOX BODIES



Flooring, impact protection for the front wall, impact protection for the sides





Why NORDECO Truck?

Works perfect where safe and reliable floor operation is required

PASSENGER BUSES



MINIBUSES



SLATS, TRANSOMS AND BENCHES
FOR PVC BOATS



CHILDREN'S AND SPORTS PLAYGROUNDS



CONCERT AND STAGE AREAS



CONSTRUCTION SCAFFOLDING





Why NORDECO Truck?

3 options of the product are available

Smooth/Wire mesh with logo



Smooth/Wire mesh



Raw plywood CP grade/Wire mesh





Why NORDECO Truck?

Cut-to-size products are available

In July 2025, Nanxing NPL440D CNC sawing center was commissioned for cut-to-size plywood according to customer needs





NORDECO Truck is available to order in 2025: 4'x8' and 5'x10', as well as cut-to-size products, in thicknesses 9-40 mm

TECHNICAL CHARACTERISTICS		SIZES	THICKNESS AND NUMBER OF PLIES				PHYSICAL AND MECHANICAL PROPERTIES	
Thickness, mm	9-40	Standard sizes, mm (ft)	Thickness mm	Number of plies	Tolerances on nominal thickness, mm	Tolerance on thickness within one panel, mm	Ultimate bending strength:	
Surface type	Smooth/wire mesh (F/W)	1220x2440, 1250x2500 (4x8)	9	7	+0.4/-0.6	0.6	along the grain, MPa, min	40
Film density, g/m ²	120	1220x3000, 1220x3300 (4x10)	12	9	+0.5/-0.7		across the grain, MPa, min	30
Formaldehyde emission class	E0.5	1525x2500 (5x8)	15	11	+0.6/-0.8		Modulus of elasticity in static bending:	6 000 3 000
Wear resistance of the film (F), cycles in Taber abrasion test	≥400	1500x3000 (5x10)	18	13	+0.7/-0.9		along the grain, MPa, min	
Water resistance	High	1500x3300, 1525x3300 (5x11)	21	15	+0.8/-1.0		across the grain, MPa, min	
Plywood density, kg/m ³	640-700	1525x4000 (5x13)	24	17	+0.9/-1.1	1.0	Wear resistance of the film (W), cycles in Taber abrasion test	≥300
Moisture content, %	≤12		27	19	+1.0/-1.2		Bond strength of the overlay to plywood	The overlay shall not delaminate at the intersection point of two incisions/cuts
Edge sealing	Waterproof acrylic paint dark brown color		30	21	+1.1/-1.3			
			35	25	+1.3/-1.5			
			40	28	+1.4/-1.6			

COMPLIANCE

E0.5

CE

CARB

EPA





Why to work with NORDECO?



180 000 m³ birch plywood per year

CUSTOMERS BENEFITS



STATE-OF-THE-ART PLYWOOD MILL



STABLE QUALITY OF
FILM-FACED PLYWOOD



ALL THICKNESSES AVAILABLE



SWIFT RESPONSE



RELIABLE SUPPLY





Why to work with NORDECO?

Modern large-scale plywood mill



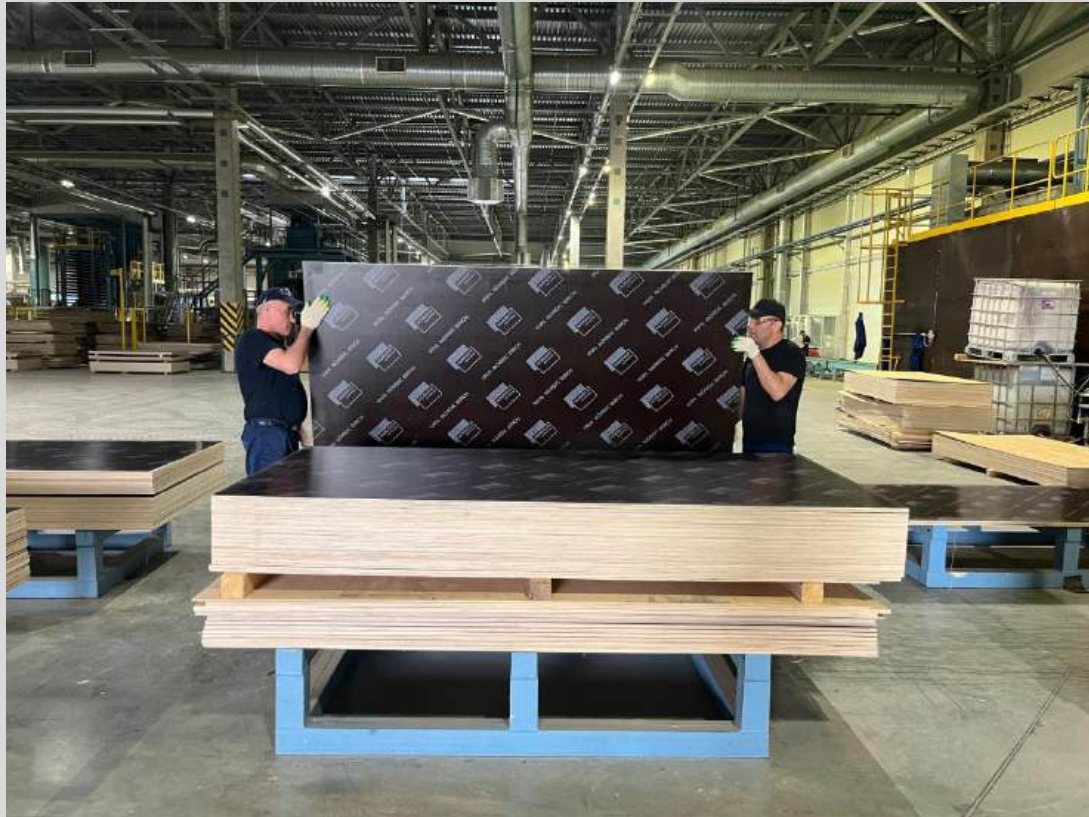
New 20-opening lamination press





Why to work with NORDECO?

Quality control before dispatching to customers



Secured birch logs supply





NORDECO plywood – direct deliveries from the mill in Vologda region, North-Western Russia

Thank you for cooperation!

Producer: Plitwood LLC., Russia,
162040, Vologda region, Vokhtoga settlement,
Zheleznodorozhnaya str., 83

Sales Department:
+7 (921) 832 02 92
sales@plitwood.ru



en.nord.eco